

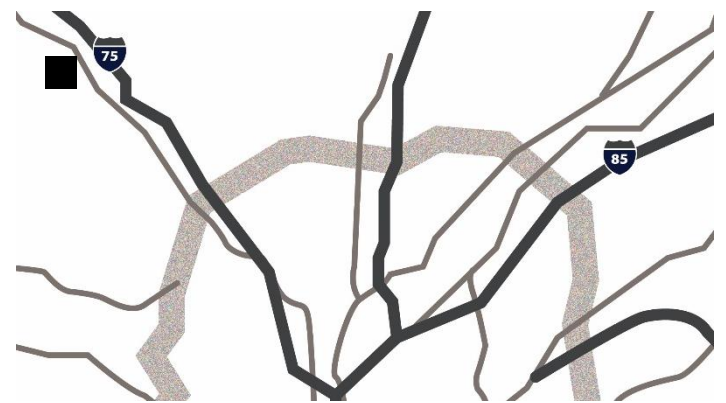


1235 Kennestone Circle, Ste E, Marietta, GA

Opportunity

- 10,134 sf available
- 1,534 sf office space
- 59,364 total building size
- 20' Ceiling Height
- 190' Bldg. Depth
- 53'4 x 35' bay size
- Doors – 2 (9'x9') DH, 1 (10'x12') Ramp

Location



30 Miles to
Airport



1.5 Miles to
I-75

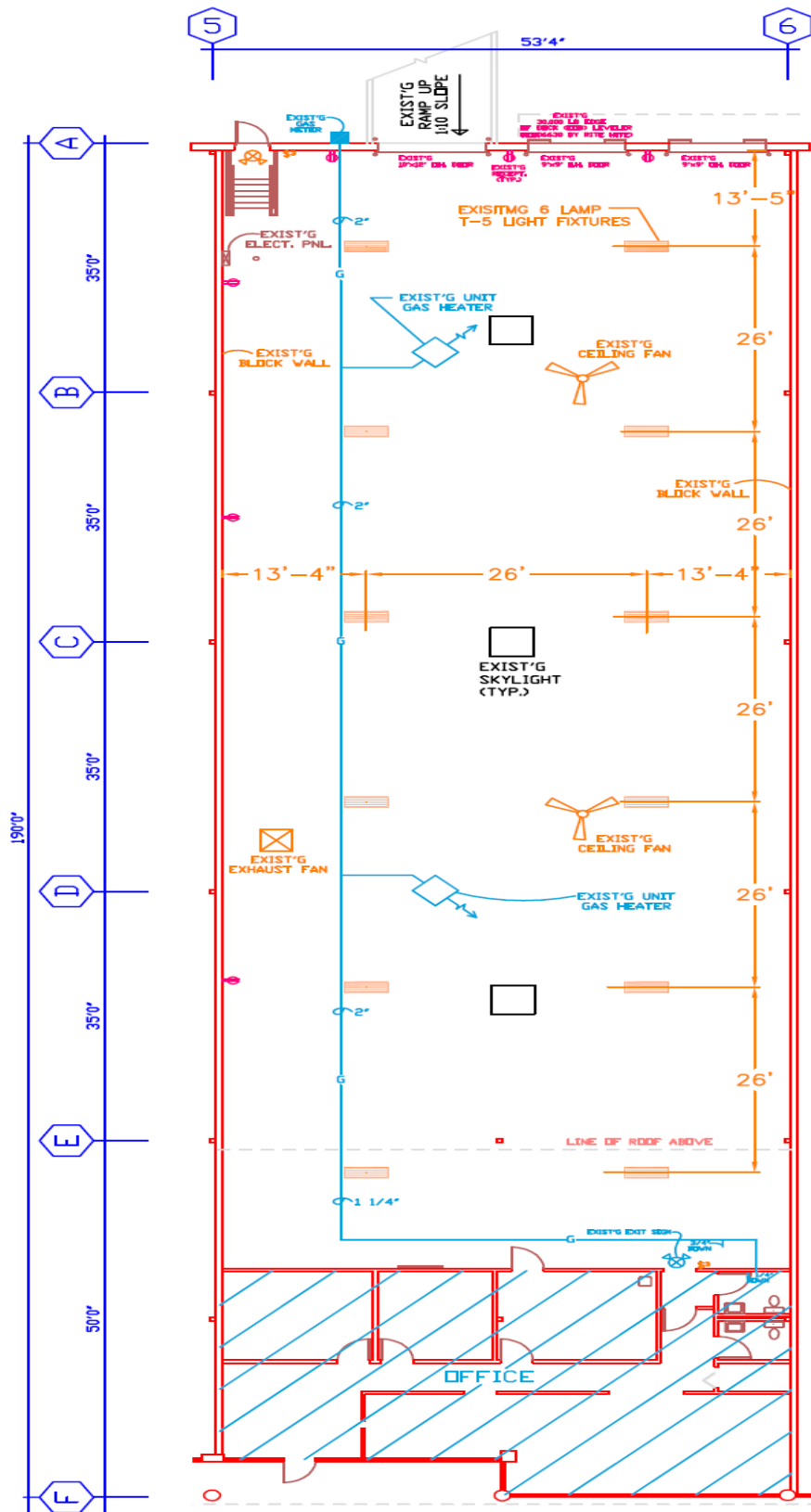


9 Miles to
I-285

**For further
information**

Ben Parker, SIOR
Senior Vice President
+1 404 409 5678

avisonyoung.com



For further information

Owned by:



Ben Parker, SIOR
Senior Vice President
+1 404 409 5678
ben.parker@avisonyoung.com

